

# Refond UVC product introduction (1) -3737

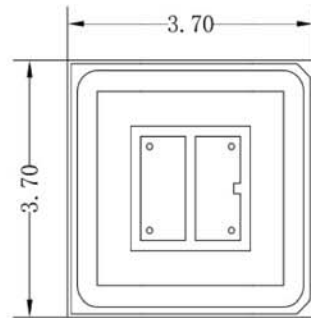
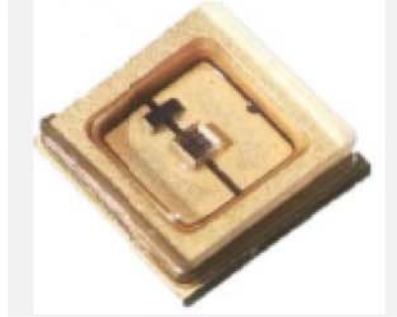


Fig.1-1 Top view 正面视图

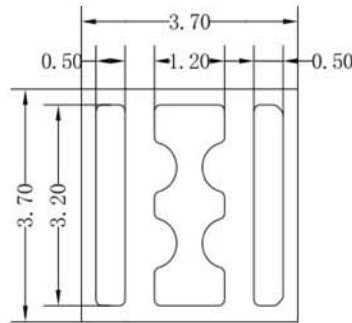


Fig.1-3 Bottom view 背面视图

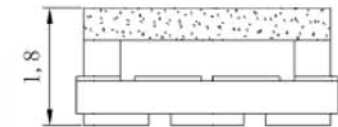


Fig.1-2 Side view 侧面视图

Part Number	Watt/W	Wavelength (nm)	Voltage	IF(mA)	Φe(mw)	Viewing angle 2θ1/2(°)
RF-C37*0-URP-AR	0.2W	270-280	5.5-6.5	20	2-3	120
	0.3W	270-280	6.0-6.5	40	4-6	120
RF-C37*0-URT-AR	0.7W	270-280	6.0-6.5	100	10-14	120
	1W	270-280	6.5-7.0	150	14-18	120

C37: ceramic 37\*37mm, “\*” : chip brand, UR:265-280nm, P:10\*20mil,T:20\*20mil。



## Refond UVC product introduction (2) -3737 inorganic

C37: ceramic 37\*37mm, “\*” : chip brand, UR:265-280nm, P:10\*20mil,T:20\*20mil.

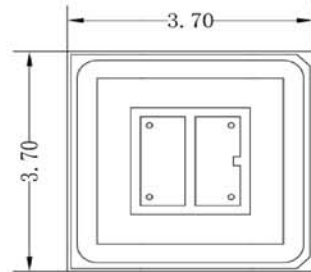
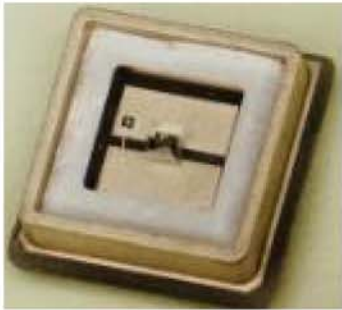


Fig.1-1 Top view 正面视图

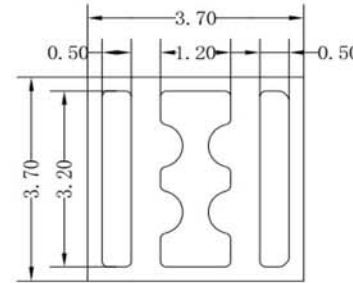


Fig.1-3 Bottom view 背面视图

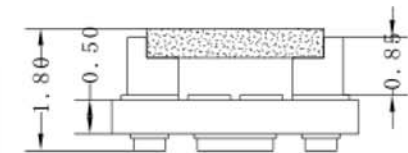


Fig.1-2 Side view 侧面视图

Part Number	Watt/W	Wavelength (nm)	Voltage	IF(mA)	Φe(mw)	Viewing angle 2θ1/2(°)
RF-C37*0-URH-AR	1W	270-280	5.5-6.5	150	16-20	120
	1.5W	270-280	6.5-7.5	200	22-26	120
RF-C37*0-URE-AR	2W	270-280	5.5-6.5	350	30-40	120
	4W	270-280	6.5-7.5	600	60-70	120

C37: ceramic 37\*37mm, “\*” : chip brand , UR:270-280nm, H: 30\*30mil,E:45\*45mil.

## Refond UVC product introduction (6) -6060 four chips

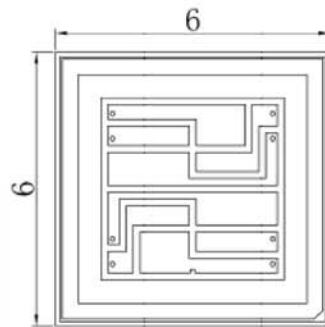
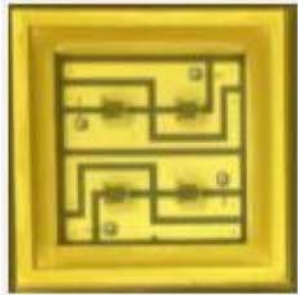


Fig.1-1 Top view 正面视图

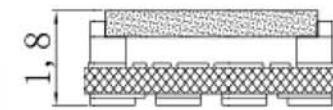
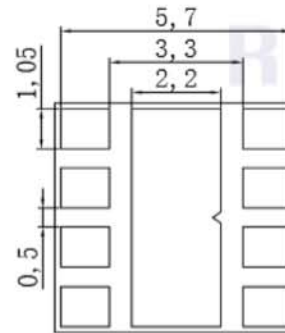
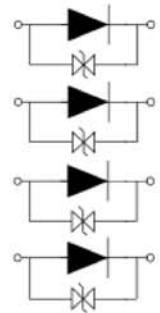


Fig.1-2 Side view 侧面视图



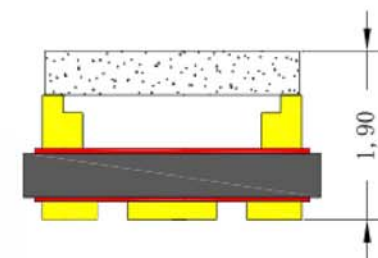
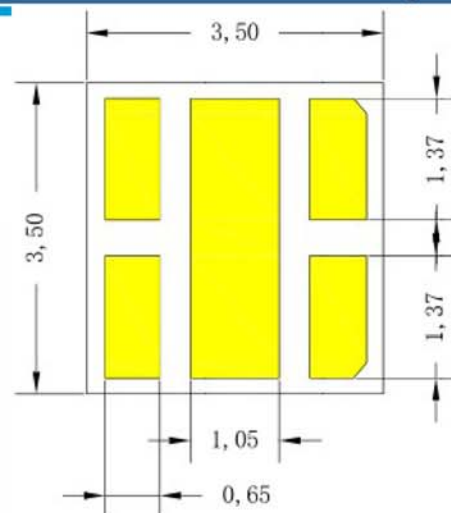
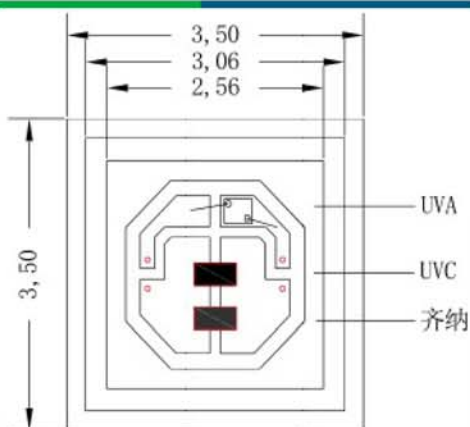
Polarity

Part Number	Watt/W	Wavelength (nm)	Voltage	IF(mA)	Φe(mw)	Viewing angle 2θ1/2(°)
RF-C60*0-URT-AR	4*0.5W	270-280	6.0-6.5	4*100	36-48	120
RF-C60*0-URH-AR	4*1W	270-280	6.0-6.5	4*150	60-80	120

C60: ceramic 60\*60mm, "\*" : chip brand , UR:270-280nm,T:20\*20mil, H:30\*30mil.



## Refond UVC product introduction (3) -3535



Part Number	Watt/W	Wavelength (nm)	Voltage	IF(mA)	Φe(mw)	Viewing angle 2θ1/2(°)
RF-C35N0-UACP-AR	0.2W	270-280/395-405	6-7	20	1-3	120
RF-C35N0-UACP-AR	0.3W	270-280/395-405	6-7	40	2-4	120
RF-C35N0-UACP-AR	0.5W	270-280/395-405	6-7	50	3-5	120